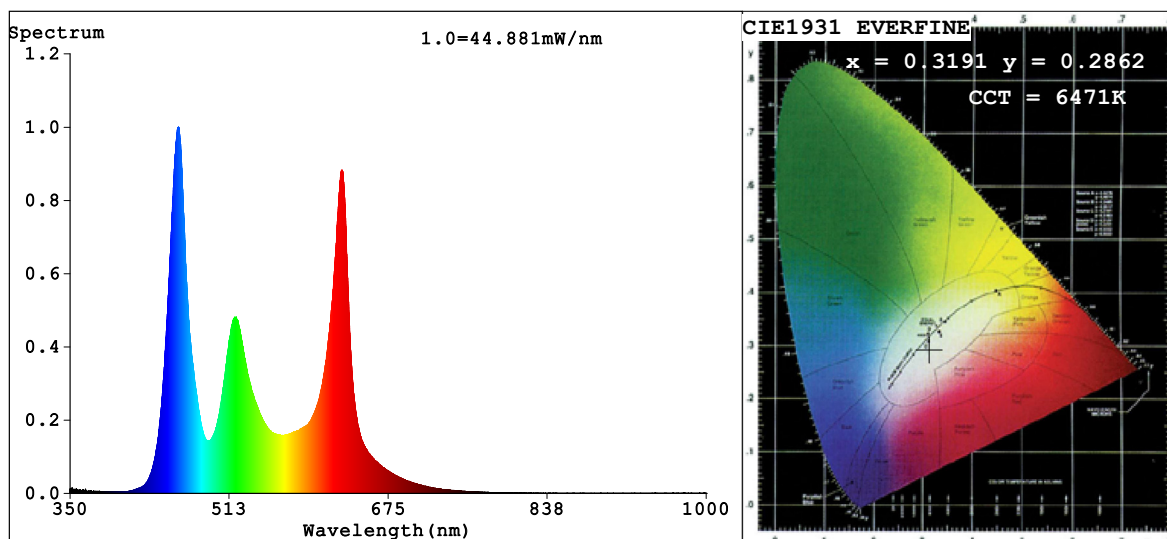


## Spectrum Test Report



### Color Parameters:

Chromaticity Coordinate:  $x=0.3191$   $y=0.2862$   $u'=0.2202$   $v'=0.4444$   
 CCT=6471K (Duv=-0.0243) Dominant WL:Ld =-565.2nm Purity=18.5%  
 Ratio:R=26.1% G=66.4% B=7.5%; Peak WL:Lp=460.8nm FWHM=21.0nm  
 Render Index:Ra=53.7 CRI=46.6 TM30:Rf=69 Rg=120  
 R1 =33 R2 =63 R3 =90 R4 =42 R5 =43 R6 =52 R7 =79  
 R8 =28 R9 =0 R10=23 R11=25 R12=48 R13=38 R14=89 R15=25

### Photo Parameters:

Flux = 893.6 lm Eff. : 47.12 lm/W Fe = 3.537 W

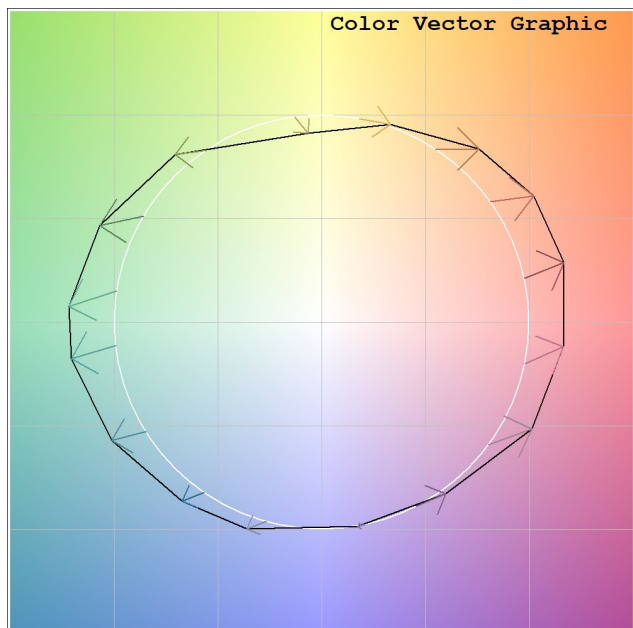
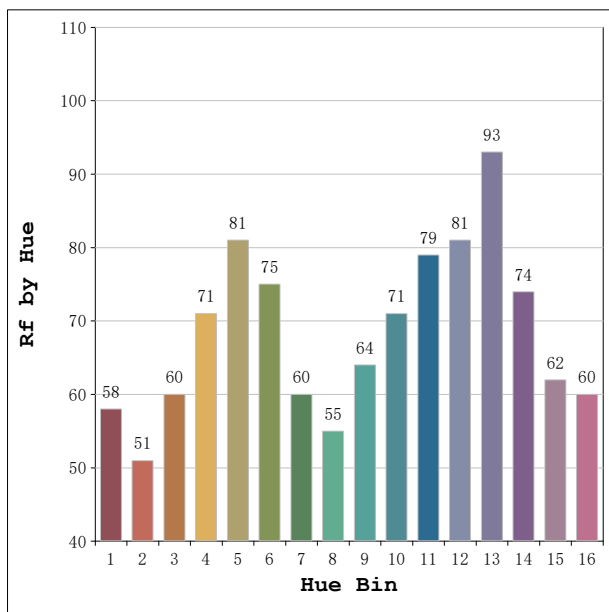
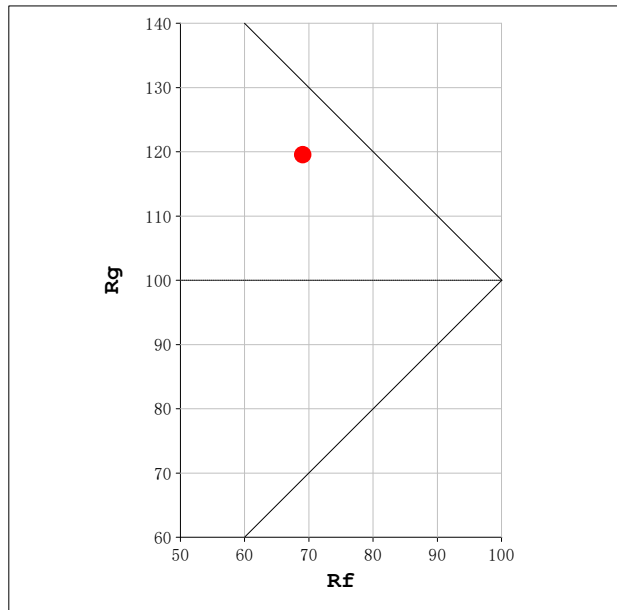
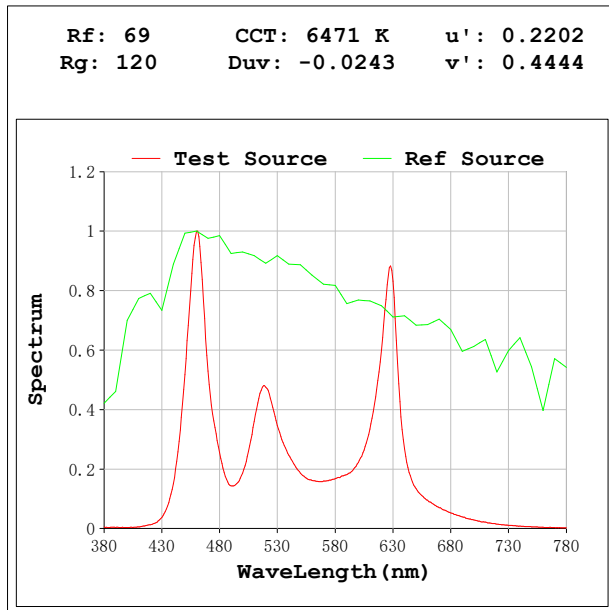
### Electrical parameters:

V = 23.998 V I = 0.7902 A P = 18.96 W PF = 1.000

Status: Integral T = 704 ms Ip = 48808 (74%)

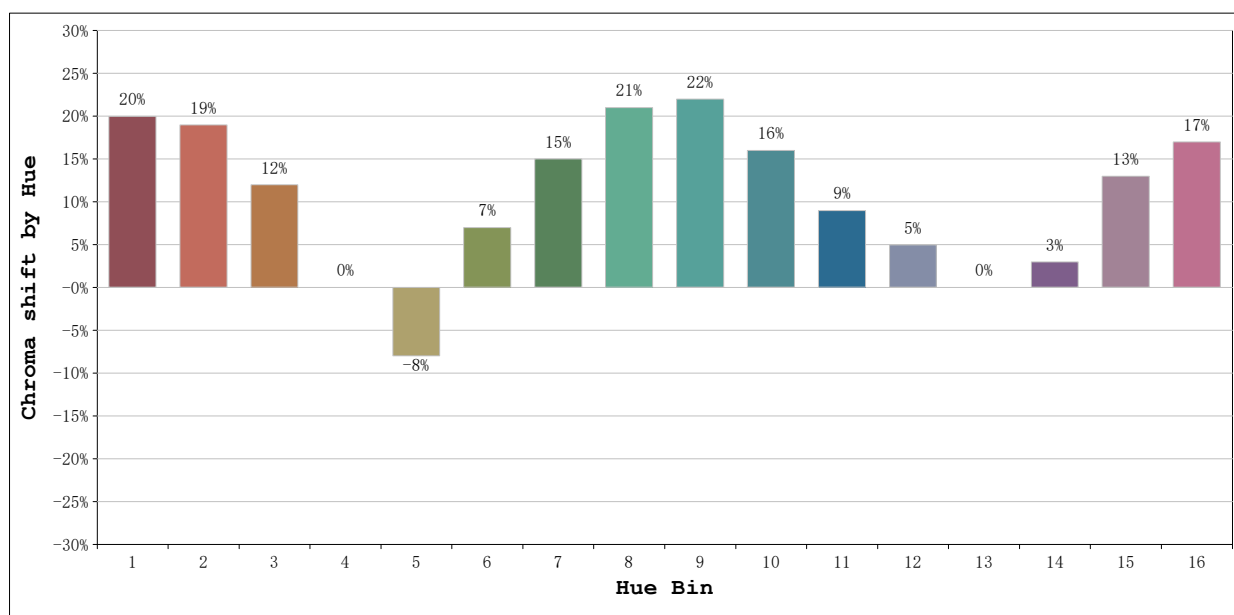
Model:Ecoled Marbella  
 Tester:Sergio Carneros  
 Temperature:25Deg  
 Manufacturer:Luz Negra S.L

Number: 33.192  
 Date:2025-01-08 14:53:53  
 Humidity:57%  
 Remarks:100cm de tira flexible



**Model:**Ecoled Marbella  
**Tester:**Sergio Carneros  
**Temperature:**25Deg  
**Manufacturer:**Luz Negra S.L

**Number:** 33.192  
**Date:**2025-01-08 14:53:53  
**Humidity:**57%  
**Remarks:**100cm de tira flexible



			Graphic shift(%)	
Hue Bin	Hue Angle	Rf	Chroma	Hue
1	0.0° - 22.5°	58	20	4
2	22.5° - 45.0°	51	19	-8
3	45.0° - 67.5°	60	12	-16
4	67.5° - 90.0°	71	0	-14
5	90.0° - 112.5°	81	-8	-4
6	112.5° - 135.0°	75	7	14
7	135.0° - 157.5°	60	15	16
8	157.5° - 180.0°	55	21	12
9	180.0° - 202.5°	64	22	2
10	202.5° - 225.0°	71	16	-5
11	225.0° - 247.5°	79	9	-6
12	247.5° - 270.0°	81	5	-7
13	270.0° - 292.5°	93	0	-2
14	292.5° - 315.0°	74	3	15
15	315.0° - 337.5°	62	13	18
16	337.5° - 360.0°	60	17	12

**Model:**Ecoled Marbella  
**Tester:**Sergio Carneros  
**Temperature:**25Deg  
**Manufacturer:**Luz Negra S.L

**Number:** 33.192  
**Date:**2025-01-08 14:53:53  
**Humidity:**57%  
**Remarks:**100cm de tira flexible